

! Safety instructions !

For mounting, jack up the vehicle in the middle of the frame so that it is secured against falling over and the rear wheel is not in contact with the ground.

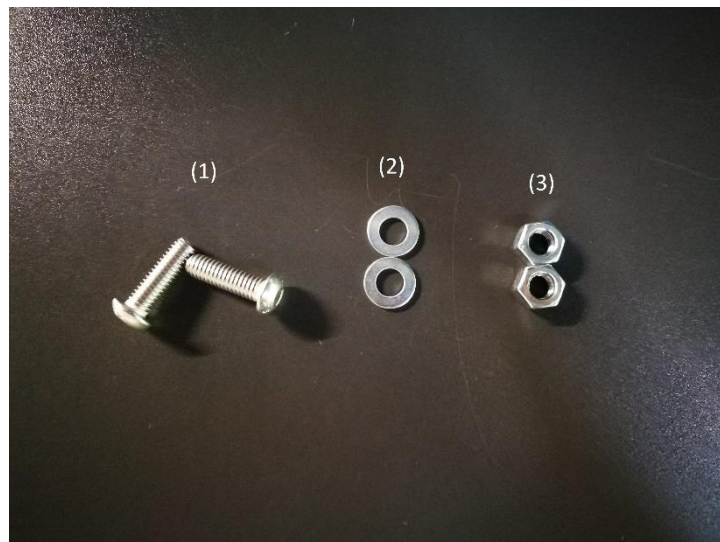


- When mounting the licence plate holder, ensure sufficient clearance to all moving parts.
- We recommend using a medium-strength screw lock for the screws. (e.g. LOCTITE 243, blue) for the screws.
- To fit the licence plate holder, it is necessary to remove the original licence plate holder incl. licence plate light. The licence plate light used in the Cult-Werk licence plate holder complies with the legal requirements.
- The supplied **reflector** (HAS-3140-00, 103x16mm) must be fitted under the licence plate.
- **Only with HD-BRO079 incl. indicator, rear & brake light:**
The original 3-in-1 rear lights must be removed here. The lighting installed in the Cult-Werk number plate holder complies with the legal requirements.
The resulting free space on the fender struts can be covered with the Cult-Werk indicator mounting plates (HD-UNI020).

Scope of delivery:

- (a) 1 x Cult-Werk number plate holder in the middle made of metal
- (b) 1 x Cult-Werk ABS cover
- (c) 1 x Reflector (HAS-3140-00, E4-3R-02 3851)
- (d) 1 x LED number plate light (E4 50R-0019900 1&2)
- (e) 2 x LED indicator (E1 EC-MI007LED, 50R-00 4271) *
- (f) 1 x LED brake/tail light (E4 EC-TL008LED, 50R-00 1993) *
- (g) 1 x Mounting material consisting of:
 - (1) 2 x Oval-head screw ISO7380, 3/8" – 16 UNC x 1 1/4"
 - (2) 2 x Flat washer ISO7089
 - (3) 2 x Hexagon nut DIN934

*= only included with HD-BRO079 (licence plate holder incl. indicators, rear & brake light)



Cult-Werk Licence plate holder HD-BRO078



HD-BRO079 incl. indicator and rear & brake light

Dismantle original licence plate holder (Abb.1)

1. disconnect the licence plate light
2. Loosen the screws (8) to remove the bracket with the licence plate holder (18) to remove
3. **only for HD-BRO079:**
The original rear lights are unplugged in the seat compartment and then dismantled

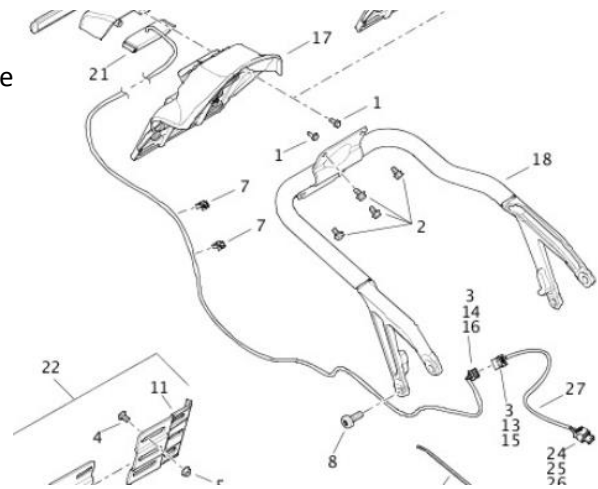


Abb.1

Mounting Cult-Werk number plate holder

1. loosen the original rear screws (5, fig.3) and replace them with the screws supplied (1). these are not screwed in all the way, so that they protrude about 4-5mm from the original mounting plate (8).
2. hook in the Cult-Werk number plate holder so that the screws go through the fastening holes and the anti-twist device sits under the fastening plate.
3. The screws (1) are now tightened.
4. screw the licence plate holder from the inside with washer (2) and hexagon nut (3).
5. the licence plate holder can be brought into the desired position via the adjustment mechanism.
6. the wiring for the number plate light and lighting (HD-BRO079 only) shall be routed under the seat compartment and properly connected.

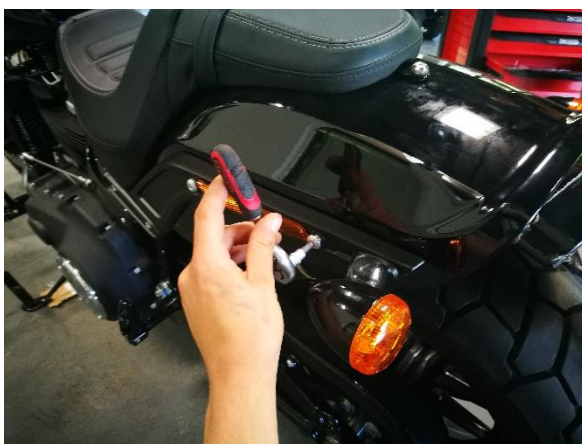


Abb.2

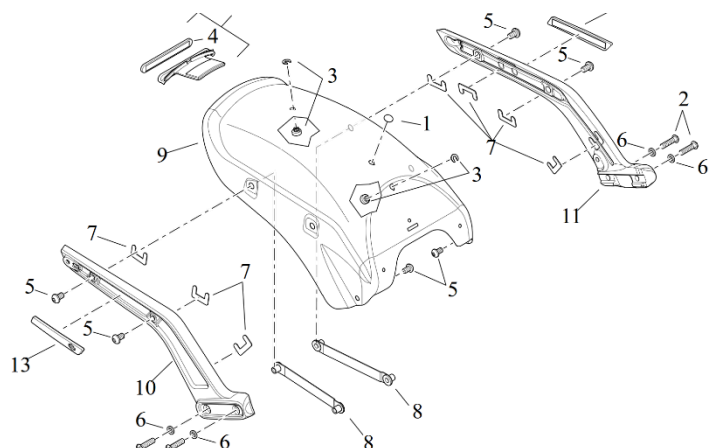


Abb.3