

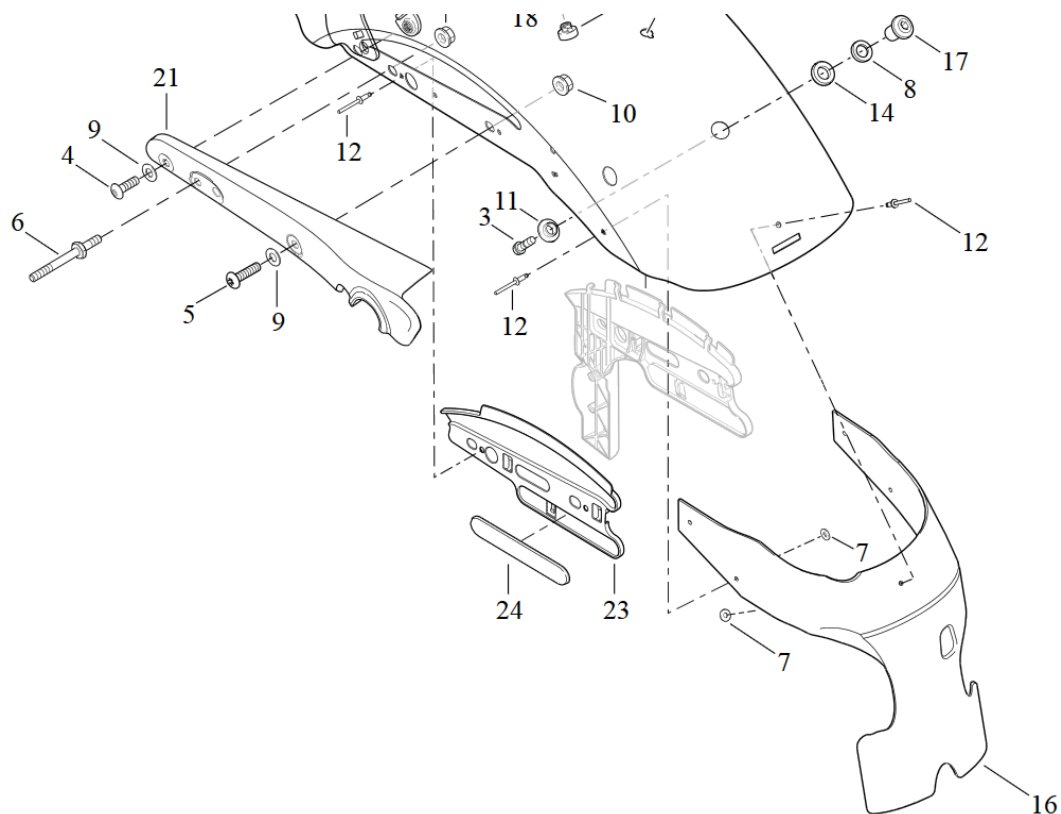
Dismantling original parts

1. Dismantle the original fender, as well as the light system and turn signals.
2. Remove the inner fender (16) by drilling out the rivets (12).

Fitting new rear fender

3. Attach the inner fender to the new "Original Style" fender with the supplied rivets.
4. Mount the new fender to the frame using the supplied bolts.
5. newly routed cables can be fixed to the fender using the cable ties supplied.

Tightening torque: 15 - 20Nm



We recommend using a medium-strength screw lock (e.g. LOCTITE 243, blue) for all screws.

! Note !

After assembly, the spring travel must be checked! If necessary, the spring travel must be limited with a spring travel limiter (HD-ROD048)!

To fit the fender, it is necessary to remove the original fender incl. licence plate holder and light system. We therefore recommend fitting a side licence plate holder (HD-SPO012) and a 3-in-1 indicator set (e.g. HD-SPO032) incl. holders (HD-SPO022).

For a visual upgrade, the indicator mounting plates (HD-SPO020) can be fitted at the original indicator position (see fig.1).



Abb. 1 – mounted Fender



Abb. 2 – Fender „Original Style“