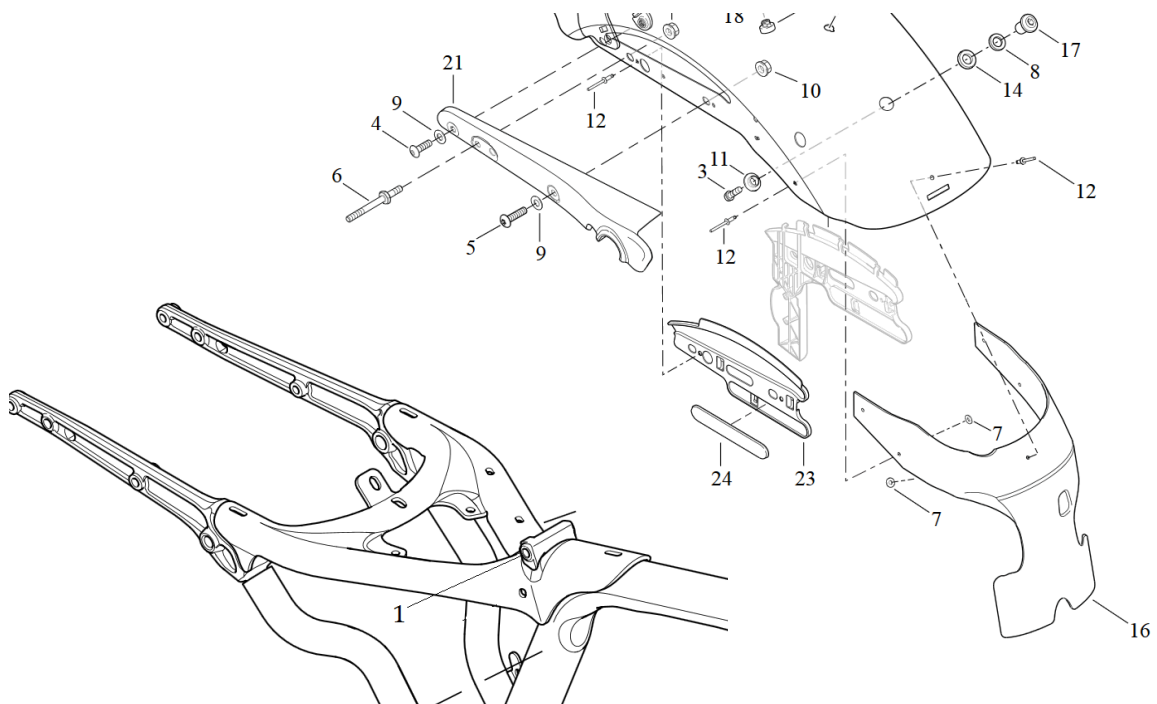


Dismantling original parts

1. Dismantle the original fender, lights and indicators.
2. Remove the inner fender (16) by drilling out the rivets (12).

Mounting the new rear

1. Attach the inner fender to the new "Café Racer" fender using the screws supplied (DIN968C St3.9x13).
2. Dismantle the original seat by loosening the screw of the tank attachment (1).
3. Attach the supplied seat to the new fender using the supplied screw.
4. Mount the new fender with the supplied screws (2x similar to M12).
5. Fasten the seat together with the tank to the frame with the original screw (1).



We recommend using a medium-strength screw lock (e.g. LOCTITE 243, blue) for all screws.

! Note !

To fit the fender, it is necessary to shorten the frame and remove the original fender incl. licence plate holder and light and indicator system.

We therefore recommend fitting a side number plate holder (HD-SPO012), the frame cover (HD-SPO032) and a 3-in-1 indicator set (e.g.HD-SPO032) incl. holders (HD-SPO022).



Abb. 1 – Mounted fender



Abb. 2 – rear fender „Cafe Racer“