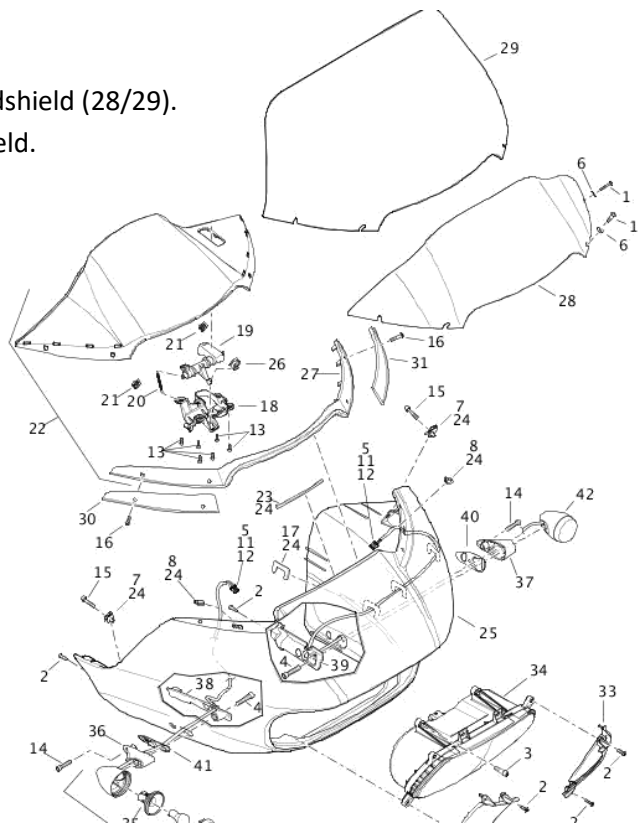


Dismantle original windshield

1. loosen the screws (1) and remove the original windshield (28/29).
2. remove the sealing element (27) from the windshield.



Fitting the "Racing" windshield

1. clamp the sealing element (27) onto the new windshield.
2. fix it with the original screws (1).

We recommend using a medium-strength screw lock (e.g. LOCTITE 243, blue) for all screws.



Abb. 1 – Mounted windscreen



Abb. 2 – windscreen „Racing“