

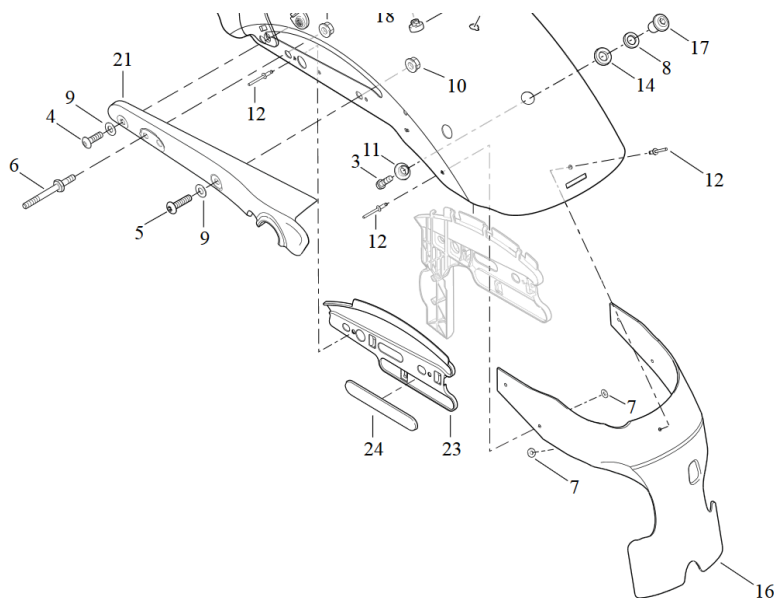
Dismantling original parts

1. Dismantle the original fender, lights and indicators.
2. remove the inner fender (16) by drilling out the rivets (12).

Fitting new rear fender

1. attach the inner fender to the new "Old School" fender with the supplied screws.
2. mount the new fender to the frame using the original screws (5).
3. fix the seat using the metal bush and the original screw (17).

Tightening torque: 10 to 15Nm



We recommend using a medium-strength screw lock (e.g. LOCTITE 243, blue) for all screws.

! Note !

After assembly, the spring travel must be checked! If necessary, the spring travel must be limited accordingly (spring travel limiter HD-UNI033)!

To mount the fender, it is necessary to remove the original fender incl. licence plate holder and light system. We therefore recommend fitting a side licence plate holder (HD-SPO012) and a 3-in-1 indicator set (e.g. HD-UNI028) incl. bracket (HD-UNI019).

The fender is used with shortened struts. Therefore, we recommend additionally mounting our Fender Struts (HD-SPO006).



Abb. 1 – Mounted fender, fender struts and turn signals



Abb. 2 – rear fender „Old School“