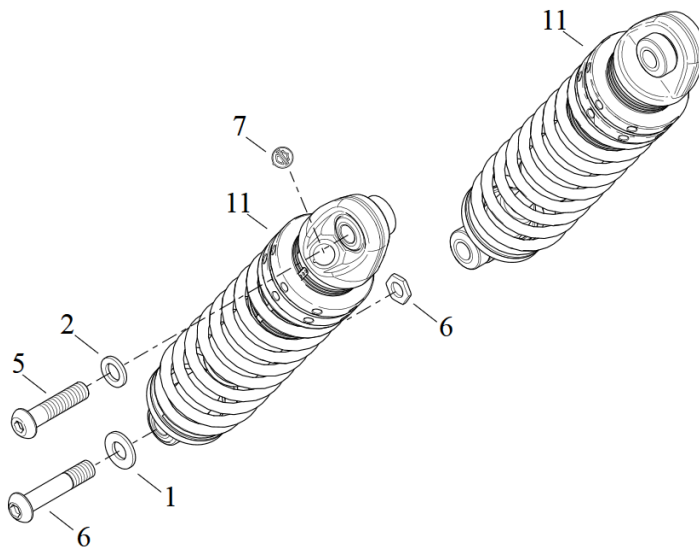


When carrying out the following work, raise the motorbike by the lower frame so that the rear swingarm is in the air with the rear wheel and the shock absorbers are relaxed. Secure the motorbike against falling over or rolling away.

1. Loosen the lower screw (6) of the shock absorber (11).
 2. put the axle cover on and fix it together with the shock absorber (11).
- Tightening torque: 50 - 60Nm



We recommend using a medium-strength screw lock (e.g. LOCTITE 243, blue) for all screws.



Abb. 1 – mounted axle cover



Abb. 2 – Rear axle cover